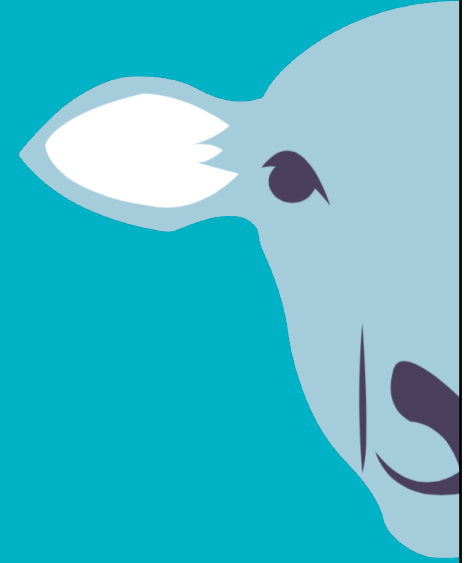




**B+LNZ GENETICS**  
**SHEEP BREEDER FORUM**

**2016**



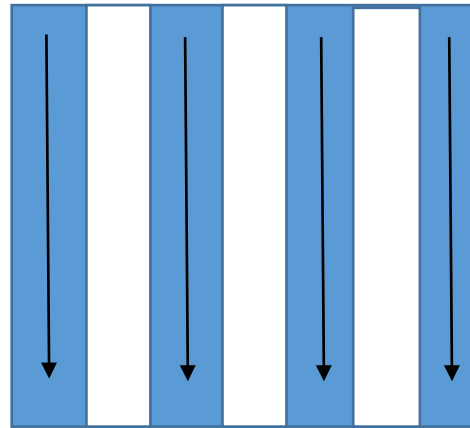
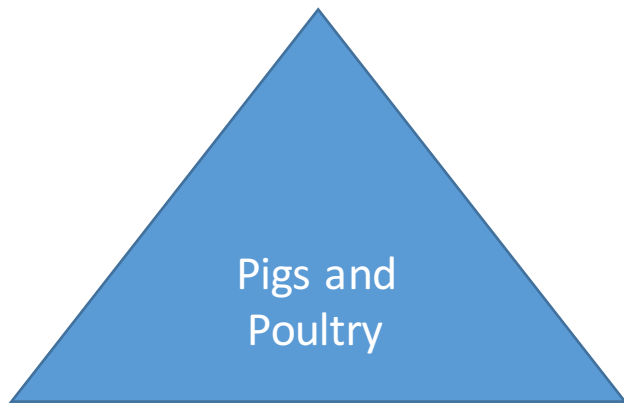
# **Future sires: next generation CPT**

Peter Amer, AbacusBio

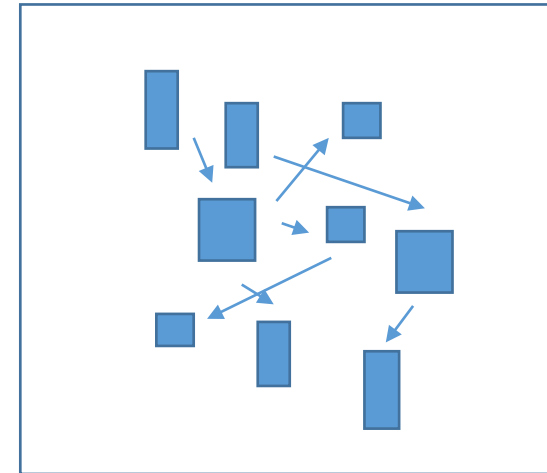
# Overview

- NZ sheep vs other industries
- What drives genetic gain in NZ sheep?
- The argument for a shift in direction
- How do we change direction?
- Where does the Next Generation CPT fit in?

# NZ sheep vs other industries



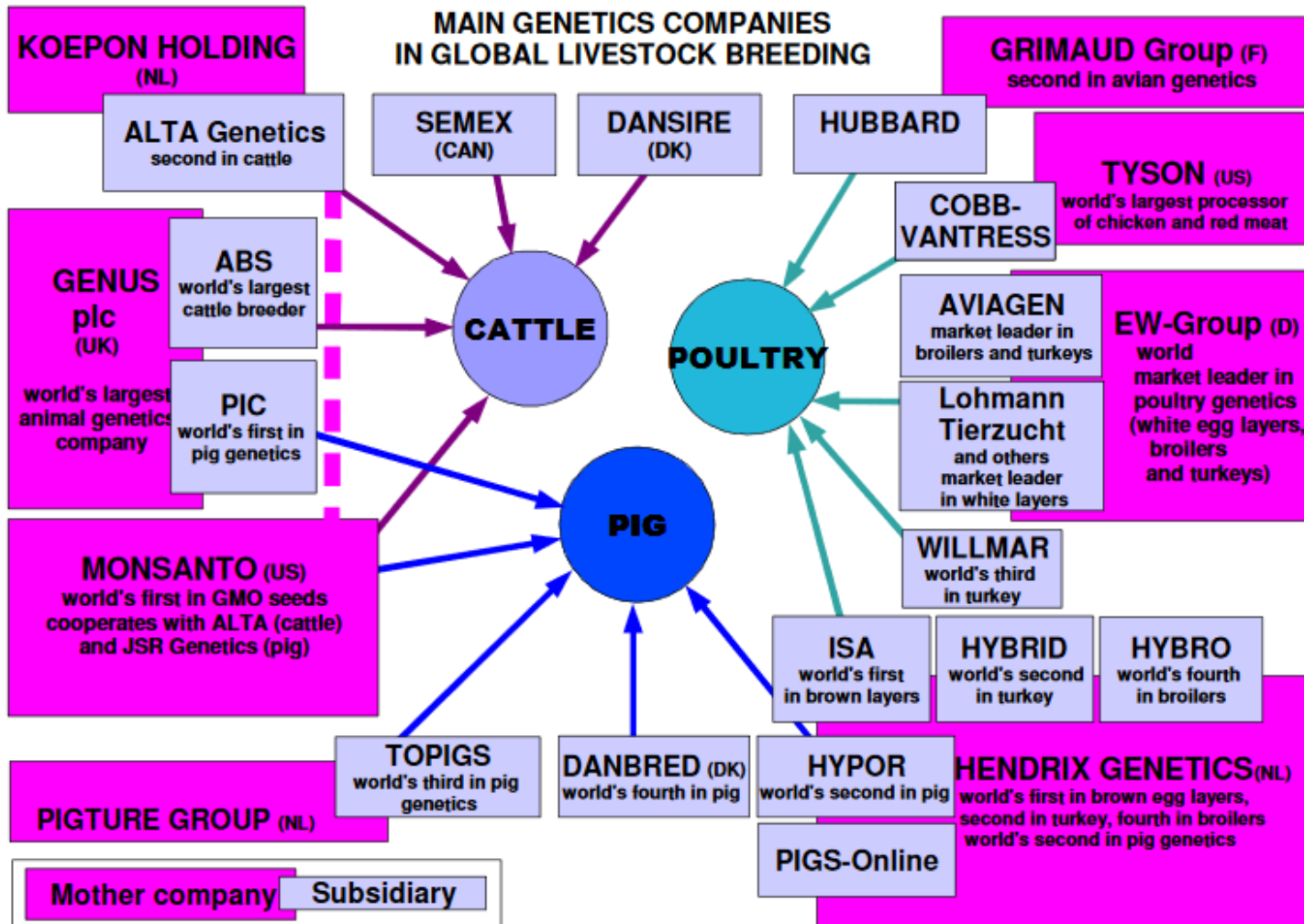
Dairy, Crops, Aquaculture



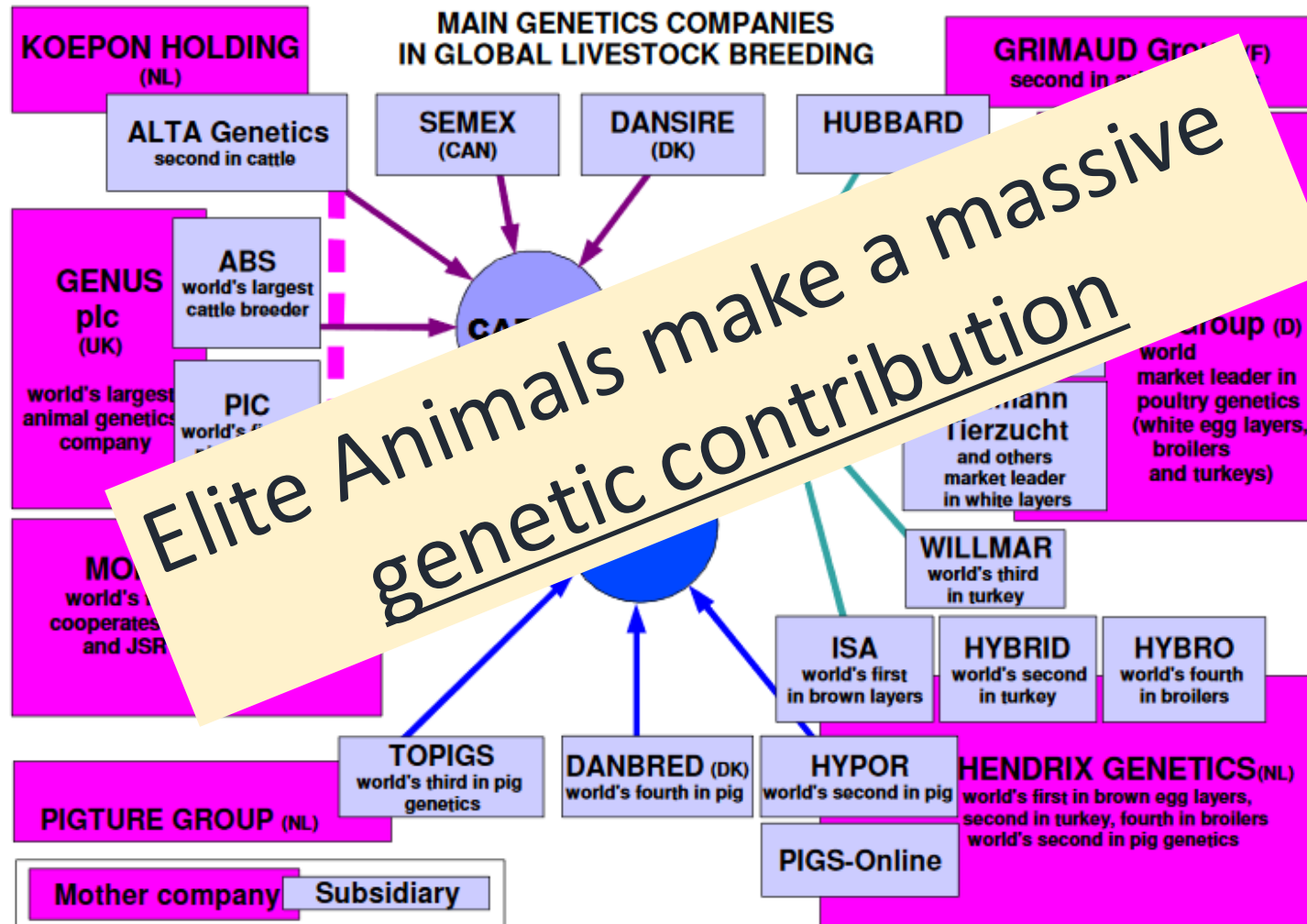
Sheep



# NZ sheep vs other industries



# NZ sheep vs other industries



# NZ sheep vs other industries



50% Overseas Holstein



High percentage of genetic  
Gain imported from USA/Aus

# NZ sheep gain drivers

- Choice of stud rams!
- Not
  - Use of AI
  - Fast generation turn-over
  - Level of recording
- Historic CPT used for
  - connectedness for SIL-ACE
  - Understanding new traits
  - Old proven sires (no embarrassment)
  - No additional genetic contribution

# A shift in direction?

- Majority of genetic gain = bigger, more prolific sheep
- SIL indexes favour bigger more prolific sheep
  - Heritable traits, easy to record!
- What about....
  - Costs
  - Ease of management
  - Twins vs triplets
  - Ewes light enough to be shorn
  - Survival (maternal ability and robustness)



# How do we change direction?

Need to identify future industry sires that create key points of difference

- Young sires .... The future!
- Wide source (bigger pool = more gains)
- Multiple initiatives (eggs in many baskets)
- Need broad trait focus (not just growth and NLB)
- Need confidence in the results
  - Progeny numbers
  - Quality of recording
- Need new elite sires to make a genetic contribution



**THANK YOU**